

Getting Started

Thank you for your purchase of the Adtec edje-5110. This quick start guide should help you with your initial setup. Further instructions are available via the manual integrated into the on-board software. You can view it by looking for the HELP tab once your unit is powered up and you are connected to the web-application. See back for more details. This manual and the most recent firmware are available on our support website, www.adtecinc.com. Advanced users can also find direct API command help as part of the on-board web application.

Front Panel LEDs:

System LED Status

Power

- Power is OFF
- Power is ON

Busy

- No Network Traffic
- Network Traffic Present

Alarm

- No System Alarm
- Minor Alarm
- Major Alarm

Aux

- Not Currently Used

Link

- No Link Detected
- Link Active

Front Panel Menus:

MODE Use Mode Button to move through top layer menus.

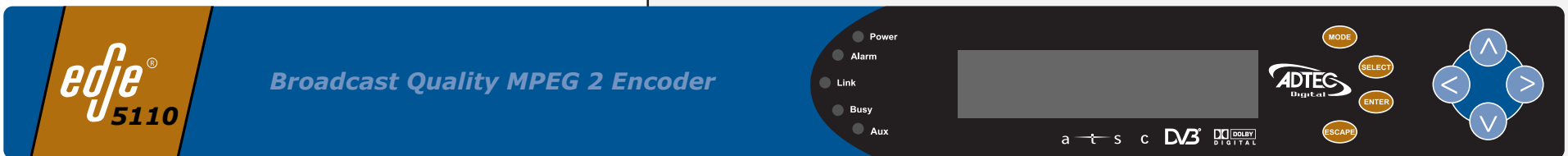
< > < > Use arrows for navigation in submenus.

SELECT Use select to enter into edit mode and **ENTER** enter to save selection.

System	Encoder Video	Encoder Audio		Transmit	PIDS	Table	Profile	Encrypt. *
Login	Status	Sample Freq.		Mux Rate	PCR	Table	Profile 1-10	Mode
Duration	Rate	A1	A2	Vid. AutoFill	Prog. No.	VBI Source		Clear Word
Network	Chroma *	Mode	Mode	IP Destination 1-4	Map PID	Closed Cap.		Encrypt Word
Time	Input	Sync			Vid. PID	Service Name		User ID 1
NTP	GOP	Input			Aud.1 PID			User ID 2
Alarm	GOP Str.	Mode			Aud. 2 PID			
COM2	GOP Size	Type			TS ID			
Firmware	Hue	Bitrate			AMOL			
	Bright.	Volume			Splice			
	Contr.				VITC Mode			
	Satur.				VITC PID			

* Optional Feature

Units ship with the front panel logged in by default. If you become logged out and are prompted for a password, use the following key sequence for access.
 Press <Select> when panel displays 'User Login -- logged out'
 Press <Up arrow>
 Press <Select>
 Press <Enter>
 Press <Right arrow>
 Press <Enter>



Adtec Digital has adopted zero-configuration networking technology, streamlining the setup and configuration processes for our products. The use of this technology enables automatic discovery of Adtec devices and services on an IP network. Used in tandem with the new web-based control and configuration applications, we can now provide one-click access to any device.

By using the built-in Bonjour® locator in the Apple® Safari® browser or the plug-ins readily available for Internet Explorer® or Firefox® browsers, users can locate all of the Adtec devices on a network via serial number or custom name. Browse, Click, Control - it's that simple.

Front Panel Status

Video Resolution	Frame Rate	Video Bit Rate
720 x 480	29i	15.00M
1MU	192K	2DD 192K 48
Audio Input 1 & 2	Sampling Rate	

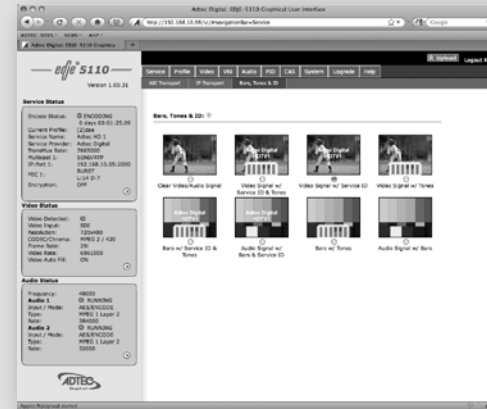
Getting Connected

To begin, you will need to connect to your edge-5110 via ethernet directly, or by adding the device to your local area network.

To add the device to a LAN, connect a standard CAT 5 Ethernet cable to your network router and then to the Ethernet port on the back of the device. The default address for all Adtec devices is 192.168.10.48. If your network is DHCP enabled and you prefer that over a static IP, you can turn on DHCP for the device via the front panel, System > Network menu.

To connect directly to the device, make sure that your computer and the device have IP addresses within the same IP class range (ex. 192.168.10.48 for the device and 192.168.10.49 for your computer). If you need to change the IP address of the device, this can be done via the front panel, System > Network menu. Using a CAT 5 crossover cable, connect one end to your computer and the other to the Ethernet port found on the processor section of the back panel. (Some computers can auto negotiate the connection and a crossover may not be necessary.)

Web-Based Control Application



Once the unit is powered up and connectivity is established, use a Bonjour® capable browser to locate your unit via serial number or point a web browser to the IP Address of the device.

The left panel of the application will report current status in real-time while the right panel tabs will allow you to configure and control your device.

If you have questions about the configuration options, look for the hints ⓘ buttons associated with each field or group of fields.

You will be prompted for a username and password.

The default username is 'adtec'. The default password is 'none'.

Processor

Power	AC Power - Standard 3 pin plug (70-240 VAC 50 - 60 Hz)
GigE	MPEG2 SPTS over IP with SMPTE 2022 forward error correction
COM2	API Serial Communication Interface
COM1	Serial Port Used for Troubleshooting
Ethernet	10/100 base T Ethernet interface
USB 2.0	Not Currently Supported

Encoder

GPIO	Tally and Control Port
ASI OUT	75 Ohm source ASI x3 per EN500083-9
CVBS In (analog)	75 Ohm terminated NTSC or PAL D1 Composite Video Input
SDI In	75 Ohm terminated Input, SMPTE (SD)259/(HD)292 Video and (SD)272/(HD)299 Audio
AES Audio	75 Ohm AES Audio Input & 75 Ohm Compressed Audio Output (1/2 & 3/4)
Analog Audio In	600 Ohm Balanced Analog Audio Input (1/2 & 3/4)

